

SMX

CONVENTION CENTER
CLARK

BACOLOD • CLARK • CEBU • DAVAO • MANILA • OLONGAPO

Xplore endless possibilities.



SMX

CONVENTION CENTER

OLONGAPO

SMX

CONVENTION CENTER

BACOLOD

SKYHALL

SEASIDE CEBU

SMX

CONVENTION CENTER

DAVAO

SMX

CONVENTION CENTER

CLARK

SMX

CONVENTION CENTER

MANILA

SMX

CONVENTION CENTER

AURA



SMX
CONVENTION CENTER
OLONGAPO

SMX
CONVENTION CENTER
BACOLOD

SKYHALL
SEASIDE CEBU

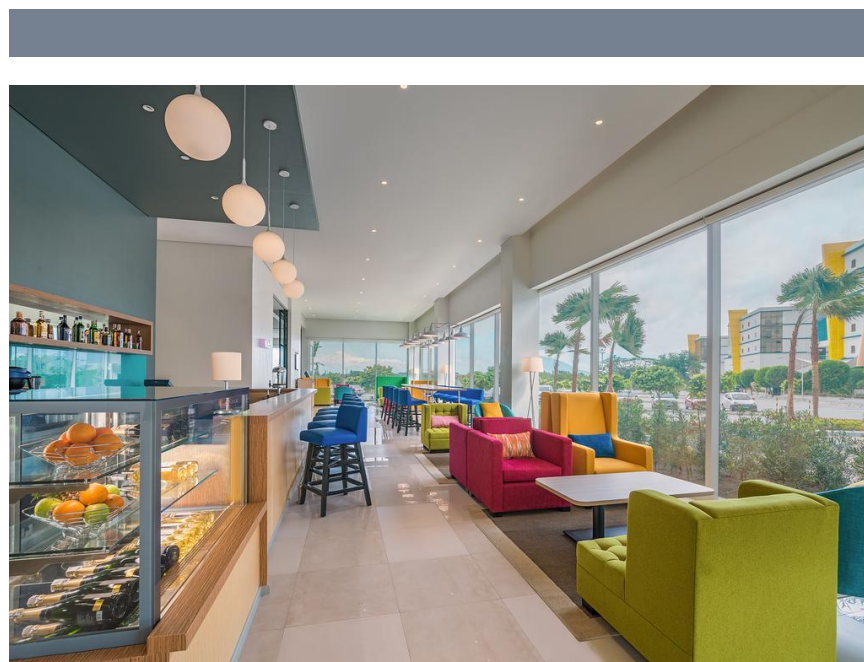
SMX
CONVENTION CENTER
DAVAO



SMX
CONVENTION CENTER
CLARK

SMX
CONVENTION CENTER
MANILA

SMX
CONVENTION CENTER
AURA





SMX CLARK AT A GLANCE

- 7th property under SMX Convention Center
- 2nd stand-alone convention center after SMX Manila
- Conveniently located beside Park Inn By Radisson Clark and SM City Clark accessible via Sky Line (Bridgeway)
- 15 minutes from Clark International Airport
- Over 3,350 parking slots around the complex
- Accessible via private vehicle, bus and taxi
- Over 4,000 sq. m. of leasable space
- Three (3) levels of event spaces

TO MANILA

park inn
by Radisson

CLARK

MALL OPEN PARKING

SMX
CONVENTION CENTER
CLARK

SM
CITY
CLARK

MALL OPEN PARKING

MALL OPEN PARKING

MALL OPEN PARKING

CLARK-MABALACAT-ANGELES ROAD

MANUEL A. ROXAS HWY

MANUEL A. ROXAS HWY

MANUEL A. ROXAS HWY

CLARK INTERNATIONAL
AIRPORT

OUR VENUES

HALLS

- Located on the Ground Level
- Three (3) Halls
- 1,466 sq. m. of leasable area

FUNCTION ROOMS

- Located on the Third Level
- Three (3) Function Rooms
- 1,664 sq. m. of leasable area
- Fully-carpeted

MEETING ROOMS

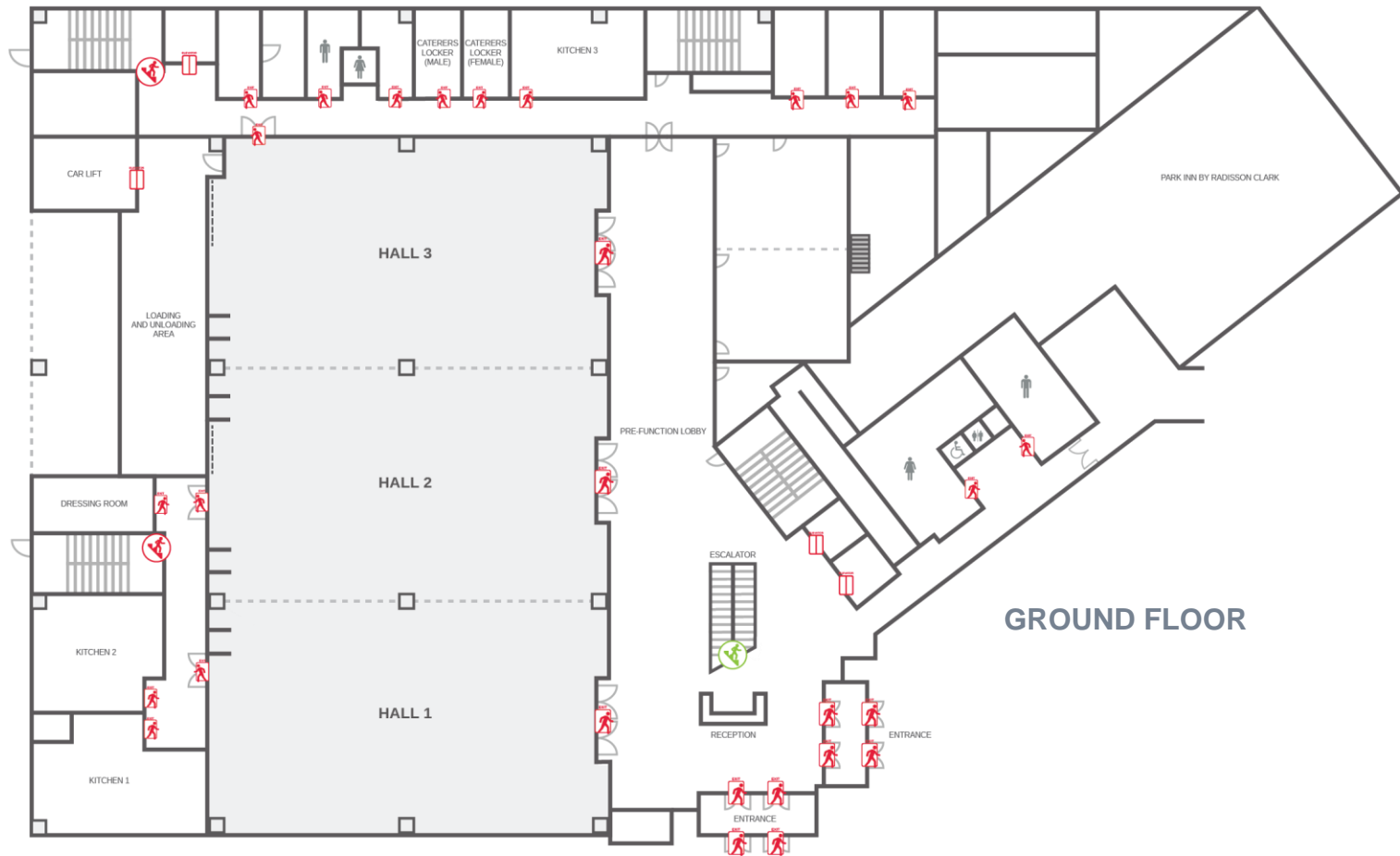
- Located on the Ground, Second and Third Levels
- Fourteen (14) Meeting Rooms
- 931 sq. m. of leasable area
- Fully-carpeted

HALLS CAPACITY

HALLS	FLOOR AREA (in sq m)	BOOTH		SET-UP TYPES (Number of Persons)			
		2 x 3 meters	3 x 3 meters	THEATER	CLASSROOM	BANQUET	COCKTAIL
Hall 1	484	40	27	506	244	300	312
Hall 2	484	40	27	506	244	300	312
Hall 3	478	40	27	500	240	300	312
Halls 1-2	968	80	54	1,012	488	600	624
Halls 2-3	962	80	53	1,006	484	600	624
Halls 1-3	1,446	121	80	1,512	728	900	936

NOTE: The figures illustrated above are intended to help determine the appropriate set up for your event. Please note that the exact capacity of the space will vary depending on the set up.

HALLS

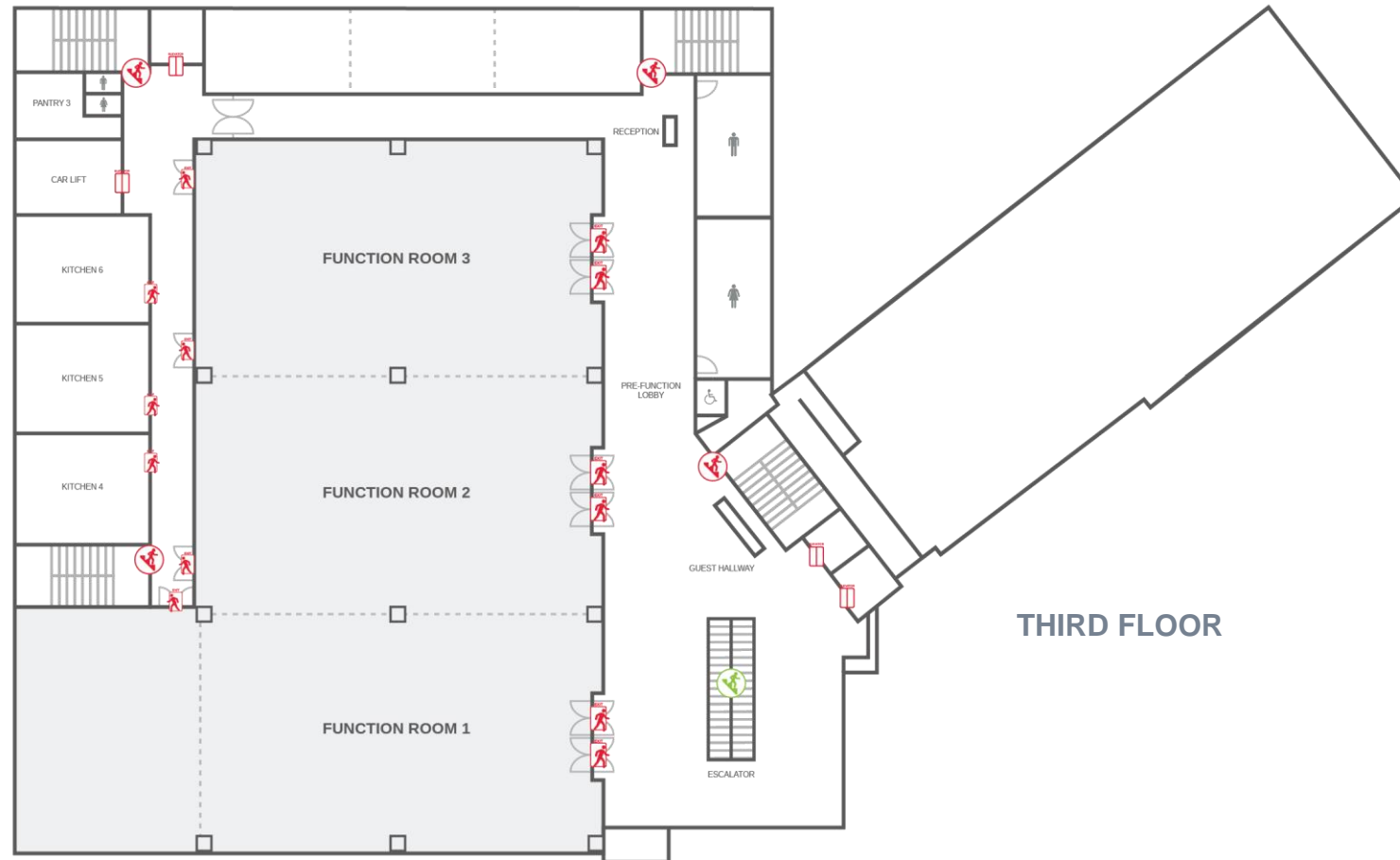


FUNCTION ROOMS CAPACITY

FUNCTION ROOMS	FLOOR AREA (in sq m)	BOOTH		SET-UP TYPES (Number of Persons)			
		2 x 3 meters	3 x 3 meters	THEATER	CLASSROOM	BANQUET	COCKTAIL
Function Room 1	702	59	39	756	353	430	451
Function Room 2	484	40	27	506	244	300	312
Function Room 3	478	40	27	500	240	300	312
Function Rooms 1-2	1,186	99	66	1,262	597	730	763
Function Rooms 2-3	962	80	53	1,006	484	600	624
Function Rooms 1-3	1,664	139	92	1,762	837	1,030	1,075

NOTE: The figures illustrated above are intended to help determine the appropriate set up for your event. Please note that the exact capacity of the space will vary depending on the set up.

FUNCTION ROOMS



MEETING ROOMS CAPACITY

MEETING ROOMS	FLOOR AREA (in sq m)	SET-UP TYPES (Number of Persons)				
		BOARDROOM	THEATER	CLASSROOM	BANQUET	COCKTAIL
Meeting Room 1	77	26	82	62	44	59
Meeting Room 2	79	27	84	63	45	60
Meeting Room 3	71	24	76	57	41	54
Meeting Room 4	65	22	69	52	37	50
Meeting Room 5	66	23	70	53	38	50
Meeting Room 6	66	23	70	53	38	50
Meeting Room 7	66	23	70	53	38	50
Meeting Room 8	64	22	68	51	37	49

NOTE: The figures illustrated above are intended to help determine the appropriate set up for your event. Please note that the exact capacity of the space will vary depending on the set up.

MEETING ROOMS CAPACITY

MEETING ROOMS	FLOOR AREA (in sq m)	SET-UP TYPES (Number of Persons)				
		BOARDROOM	THEATER	CLASSROOM	BANQUET	COCKTAIL
Meeting Room 9	62	21	66	50	35	47
Meeting Room 10	61	21	65	49	35	46
Meeting Room 11	61	21	65	49	35	46
Meeting Room 12	64	22	68	51	37	49
Meeting Room 14	66	23	70	53	38	50
Meeting Room 15	63	22	67	50	36	48
Meeting Rooms 1-2	156	55	166	125	89	119
Meeting Rooms 3-4	136	47	145	109	78	104

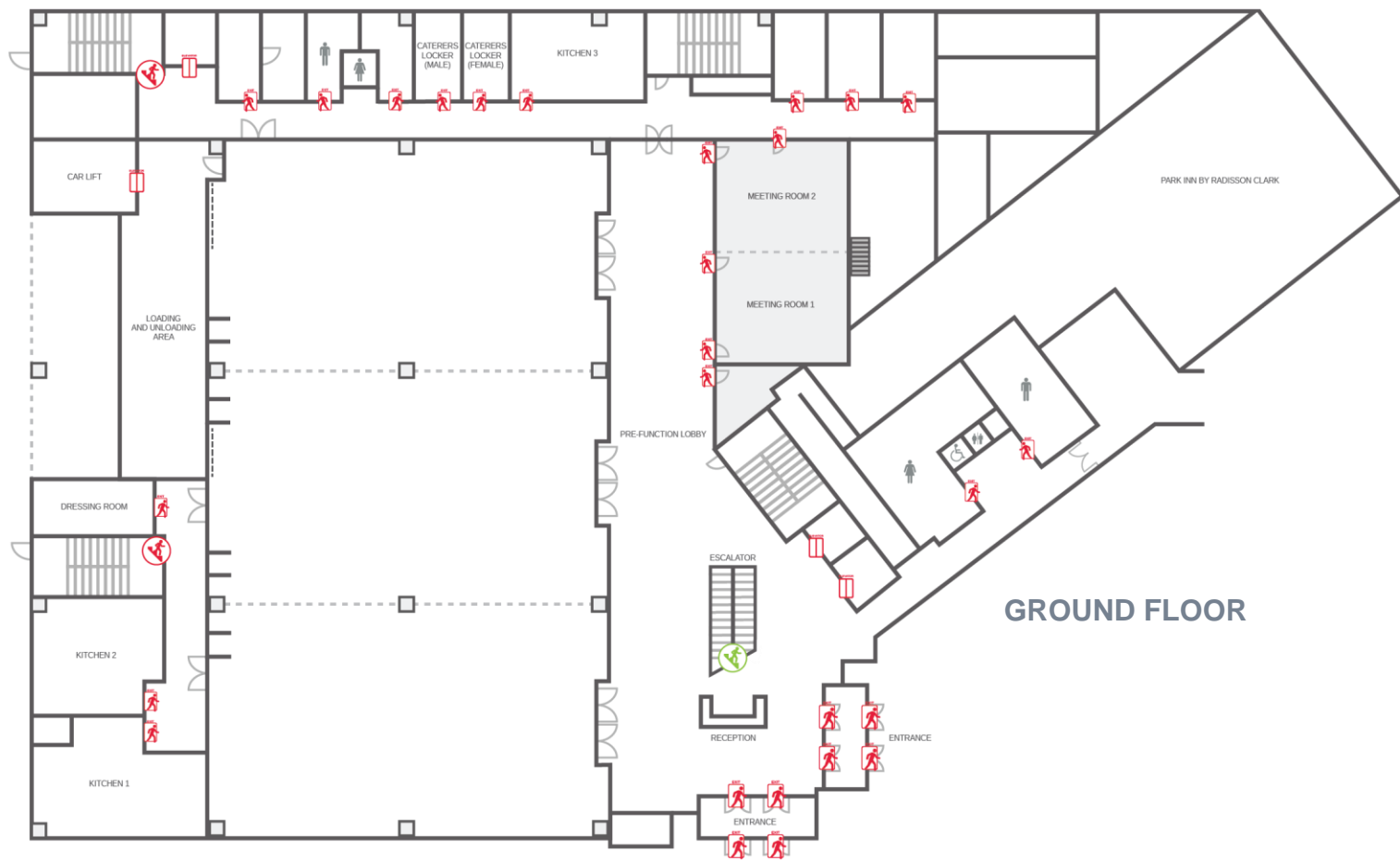
NOTE: The figures illustrated above are intended to help determine the appropriate set up for your event. Please note that the exact capacity of the space will vary depending on the set up.

MEETING ROOMS CAPACITY

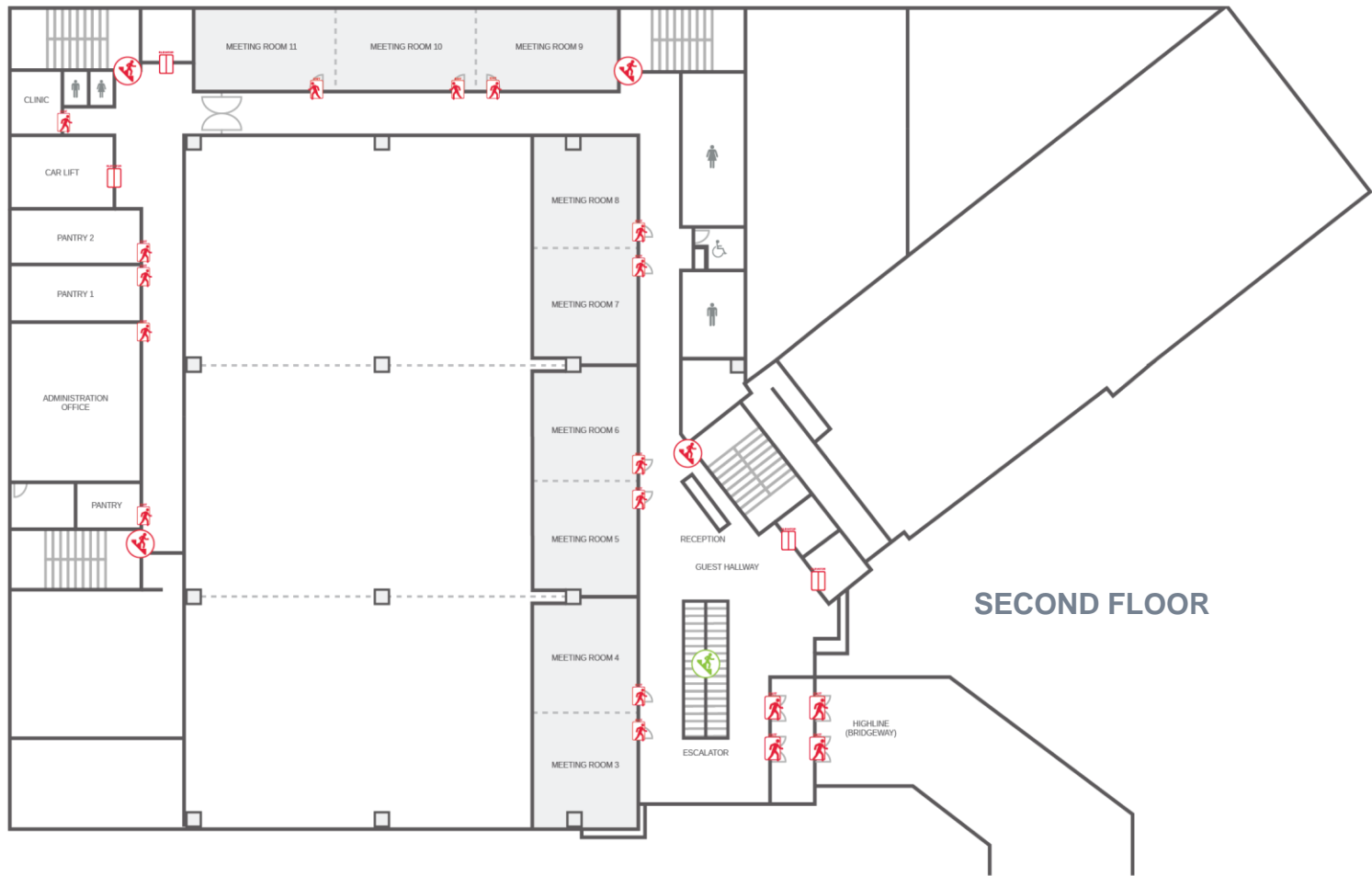
MEETING ROOMS	FLOOR AREA (in sq m)	SET-UP TYPES (Number of Persons)				
		BOARDROOM	THEATER	CLASSROOM	BANQUET	COCKTAIL
Meeting Rooms 5-6	132	45	140	106	75	101
Meeting Rooms 7-8	130	45	138	104	74	99
Meeting Rooms 9-10	123	42	131	98	70	94
Meeting Rooms 10-11	122	42	130	98	70	93
Meeting Rooms 9-10-11	184	63	196	147	105	140
Meeting Rooms 12-14	130	45	138	104	74	99
Meeting Rooms 14-15	129	44	137	103	74	98
Meeting Rooms 12-14-15	193	66	205	154	110	147

NOTE: The figures illustrated above are intended to help determine the appropriate set up for your event. Please note that the exact capacity of the space will vary depending on the set up.

MEETING ROOMS



MEETING ROOMS



MEETING ROOMS



OTHER FACILITIES

- Pre-function lobby
- Preparation kitchens
- Tables and chairs
- All gender restroom
- Access to commercial shops within SM City Clark
- PWD provisions
- Receiving Dock Unit (RDU)



SAFETY AND SECURITY FEATURES

- CCTV Security Cameras
- Back-up emergency power
- Automated fire alarm system
- Medical Clinic
- Fire exit doors
- Fire extinguishers



SMX

CONVENTION CENTER

OLONGAPO

SMX

CONVENTION CENTER

BACOLOD

SKYHALL

SEASIDE CEBU

SMX

CONVENTION CENTER

DAVAO

SMX

CONVENTION CENTER

CLARK

SMX

CONVENTION CENTER

MANILA

SMX

CONVENTION CENTER

AURA





For inquiries and reservations, please call **+63 45 499 3191 / +63 917 149 7592**
or email eventsales@smxcc.com.ph / miguel.morato@smxcc.com.ph



www.smxconventioncenter.com